

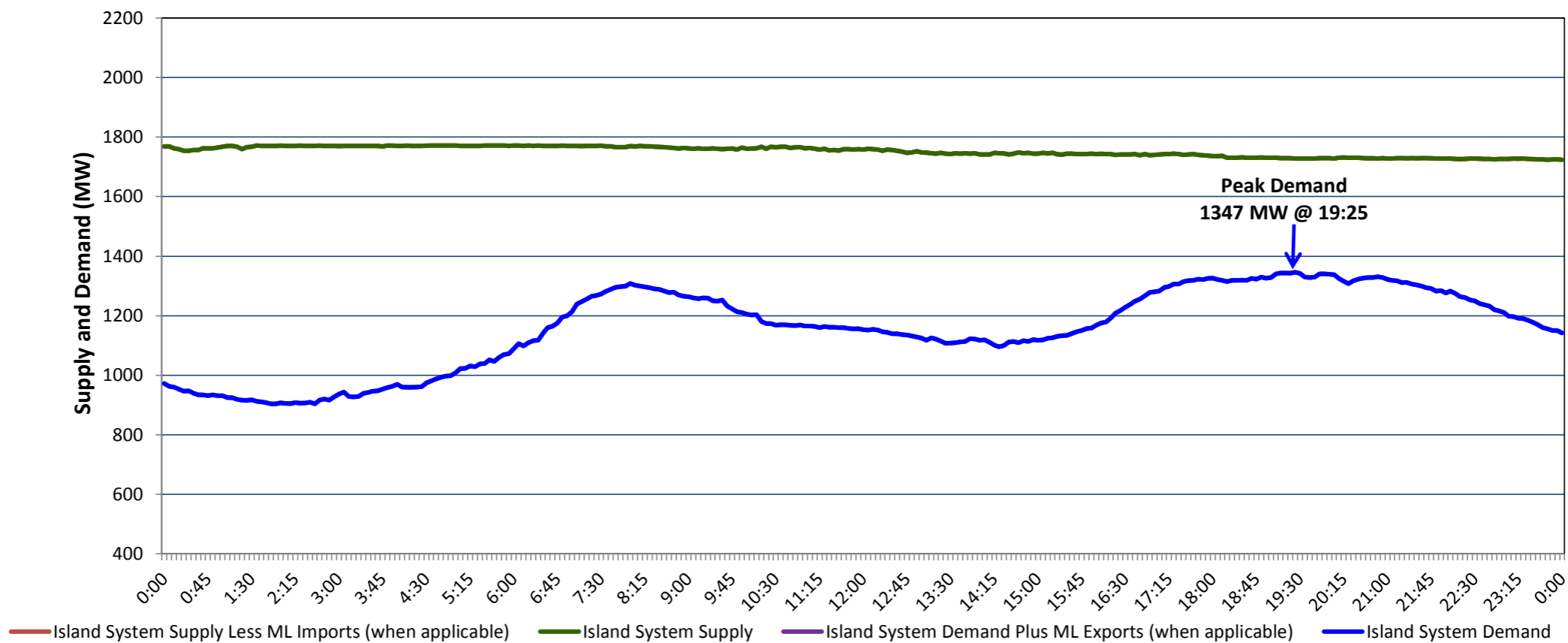
Newfoundland Labrador Hydro (NLH)

Supply and Demand Status Report Filed Wednesday, February 07, 2018

Section 1

Island Interconnected System Supply, Demand & Exports

Actual 24 Hour System Performance For Tuesday, February 06, 2018



Supply Notes For February 06, 2018

1,2

A

As of 2115 hours, January 04, 2018, Stephenville Gas Turbine available at 25 MW (50 MW).

B

As of 0749 hours, February 03, 2018, Holyrood Unit 2 available at 129 MW (170 MW).

C

As of 0749 hours, February 03, 2018, Holyrood Unit 3 available at 107 MW (150 MW).

D

As of 1204 hours, February 03, 2018, Holyrood Unit 1 unavailable 70 MW (170 MW).

Section 2

Island Interconnected Supply and Demand

Wed, Feb 07, 2018			Island System Outlook <sup>3</sup>		Seven-Day Forecast		Temperature (°C)		Island System Daily Peak Demand (MW)	
							Morning	Evening	Forecast	Adjusted <sup>7</sup>
Available Island System Supply: <sup>5</sup>	1,730	MW	Wednesday, February 07, 2018			-5	-2	1,445	1,322	
NLH Generation: <sup>4</sup>	1,415	MW	Thursday, February 08, 2018			2	3	1,375	1,268	
NLH Power Purchases: <sup>6</sup>	100	MW	Friday, February 09, 2018			-8	-7	1,560	1,446	
Maritime Link Imports:	-	MW	Saturday, February 10, 2018			-9	-4	1,470	1,362	
Other Island Generation:	215	MW	Sunday, February 11, 2018			-1	6	1,415	1,233	
Current St. John's Temperature & Windchill:	-4 °C	-8 °C	Monday, February 12, 2018			4	-2	1,440	1,332	
7-Day Island Peak Demand Forecast:	1,560	MW	Tuesday, February 13, 2018			-6	-5	1,500	1,382	

Supply Notes For February 07, 2018

3

Notes:

1.

Generation outages for running and corrective maintenance are included. These are not unusual for power system operations. They generally do not impact customer supply. The power system operators schedule outages to system equipment whenever possible to coincide with periods when customer demands are low and sufficient supply reserves are available. However, from time to time equipment outages are necessary and reserves may be impacted.

2.

Due to the Island System having no synchronous connections to the larger North American grid, when there is a sudden loss of large generating units some customer's load must be interrupted for short periods to bring generation output equal to customer demand. This automatic action of power system protection, referred to as under frequency load shedding, is necessary to ensure the integrity and reliability of system equipment. Under frequency events typically occur 5 to 8 times per year on the Island Interconnected System and the resultant customer load interruptions are generally less than 30 minutes.

3.

As of 0800 Hours.

4.

Gross output including station service at Holyrood (24.5 MW) and improved NLH hydraulic output due to water levels (35 MW).

5.

Gross output from all Island sources (including Note 4).

6.

NLH Power Purchases include: CBPP Co-Gen, Nalcor Exploits, Rattle Brook, Star Lake, Wind Generation, Vale capacity assistance (when applicable).

7.

Adjusted for CBP&P, Vale and Praxair interruptible load, Maritime Link Exports and the impact of voltage reduction (when applicable).

Section 3

Island Peak Demand Information

Previous Day Actual Peak and Current Day Forecast Peak

Tue, Feb 06, 2018	Actual Island Peak Demand <sup>8</sup>	19:25	1,347 MW
Wed, Feb 07, 2018	Forecast Island Peak Demand		1,445 MW

Notes:

8. Island Demand / ML Exports (where applicable) is supplied by NLH generation and purchases, plus generation owned and operated by Newfoundland Power and Corner Brook Pulp & Paper (Deer Lake Power, DLP).